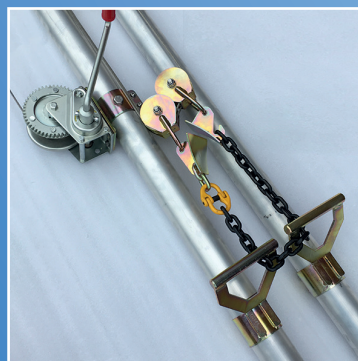
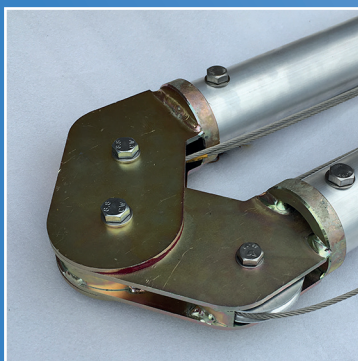




Pole Erecting Sheerlegs

Designed to raise wood poles used in the construction of overhead Power and telecom lines. This device is particularly useful in remote situations where vehicle based methods of pole erection are impractical. Integral Hand winch for raising pole lifting collar.

- Ground plates with spikes for soft ground
- Heavy duty tubular aluminium legs
- Handles integrated in each leg for manoeuvrability
- Certificate of conformity supplied
- SWL 350 Kg



PRODUCT CODE	DESCRIPTION	MAX POLE LENGTH	WEIGHT	DIMENSIONS (L x W x D)
GL/SHLM1	Sheerlegs 5m	12m	39Kg	500 x 50 x 40cm
GL/SHLM2	Sheerlegs 6m	14m	49Kg	600 x 50 x 40cm
GL/SHLM1R	Spare ropes for GL/SHLM1	-	-	-
GL/SHLM2R	Spare ropes for GL/SHLM2	-	-	-